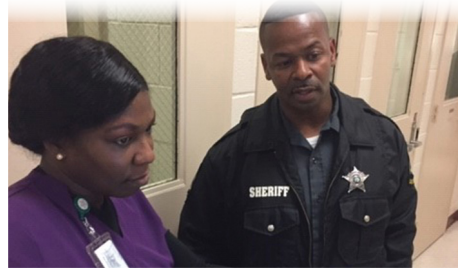




Correctional Behavioral Health Training and Certification Program

TRAIN AND GET CERTIFIED!!!



OVERVIEW:

This program ensures a candidate's knowledge of national expected practices and guidelines, legal and ethical principles and relevant security regulations.

CBHC 3RD EDITION STUDY GUIDE IS NOW AVAILABLE!!!

- Adult Correctional Officers
- Juvenile Justice Professionals
- Allied Behavioral Health Staff
- Community Corrections Officers

For more information, email healthcare@aca.org

"The CBHC training has reduced officer assaults from the mentally ill population and given officers other avenues to reduce instances of physical response to disruptive incidents."

— *Telisa White, Chief of Detention, Mecklenburg County Sheriff's Office*

"The CBHC Training program has been an important tool to help our correctional officers get the training and subsequent certification they need to properly care for this complex population."

— *Mark Inch, MA, Secretary Florida Department of Corrections*



CORRECTIONAL BEHAVIORAL HEALTH TRAINING AND CERTIFICATION CURRICULUM

Module 1 — Governance and Administration

- a. Managing the mentally ill: corrections administration and healthcare authority perspective
- b. Landmark cases
- c. Grievance mechanism
- d. Mental health staffing
- e. Access to care

Module 2 — Inmate Care and Treatment

- a. Basics of mental illness
- b. Basic services and levels of care
- c. Basic medications
- d. Multicultural treatment issues
- e. Individualized treatment/services plan
- f. The multidisciplinary service teams and treatment teams
- g. Emergency services
- h. Confidentiality

Module 3 — Special Needs and Services

- a. Suicide prevention
- b. Self-injurious behaviors
- c. Inpatient and residential care
- d. Substance use and co-occurring mental health disorders
- e. Crisis intervention and de-escalation
- f. Trauma-informed care in corrections
- g. Managing disruptive behaviors
- h. De-escalating aggressive/agitated mentally ill offenders
- i. Disciplinary process with the mentally ill
- j. Inmates in restrictive housing
- k. Mental health needs of female offenders
- l. Cognitive impairment, dementia, and alzheimer's: management and treatment
- m. Reentry pre-release planning

Module 4 — Medical and Legal Issues

- a. Informed consent and right to refuse
- b. Involuntary treatment, restraint and seclusion

Module 5 — Juveniles

- a. Development issues
- b. Juvenile mental health needs
- c. Trauma-informed care in juvenile justice

Module 6 — Community Corrections

- a. Probation/parole issues with mentally ill offenders
- b. Court diversion programs for the mentally ill

ELIGIBILITY REQUIREMENTS

A. Correctional Behavioral Health Certification Correctional Officer (CBHC-CO)

- Adult Correctional Officers OR Juvenile Justice professionals
- Equivalent of one year experience in providing care for inmates/offenders in a specialized unit OR general population for inmates with behavioral health issues
- Minimum 40 hours of behavioral health related training

B. Correctional Behavioral Health Certification Community Corrections Officer (CBHC-CC)

- Community corrections officers
- One year experience coordinating with community-based behavioral/mental health providers in supervision of offenders with behavioral health issues
- Minimum 40 hours of behavioral health related training

C. Correctional Behavioral Health Certification Behavioral Specialty (CBHC-BS)

- Allied Behavioral Health staff (Nursing, medical support staff)
- Equivalent of two years' accumulated experience providing structured activities, psychoeducational programs, etc.
- At least one year of service in a specialized unit OR general population for inmates with behavioral health issues
- Minimum 40 hours of behavioral health related training

The Train the Trainer program is available for all CBHC certifications including CBHC-CO, CBHC-BS, CBHC-CC, and CBHC-CO JUV.

For more information, please contact ACA's Office of Correctional Health.

healthcare@aca.org • 1-800-ACA-JOIN